

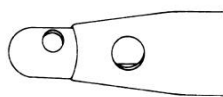
Reusable SAFE-LOCK I/A Coaxial System



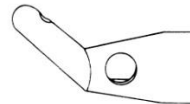
Product Features:

- Standard Luer-connector allows you to adapt to your existing Phaco or I/A system
- Tips manufactured with high-precision are designed to keep up with your changing intraoperative needs, from the capsulorhexis to cortical clean-up, to the most difficult 12 o'clock cortex removal
- Universal connector allows you to use your preferred cannulas with the same Handpiece
- Tips have a 16G (1.60mm O.D.) outer sleeve with dual 0.90 mm irrigation side ports and 21G (0.8 mm O.D.) inner cannula with 0.35 mm aspirating port. Other sizes available upon request.
- Swiss design / Swiss Made

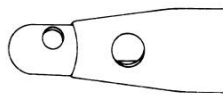
Some product forms of the SL-family



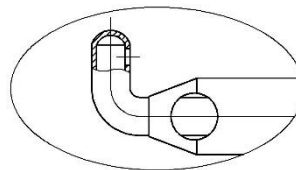
SL 110
Straight Tip for standard aspiration procedures with 0.35 mm aspirating port



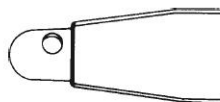
SL 120
Angled 45° Tip for peripheral cortex removal



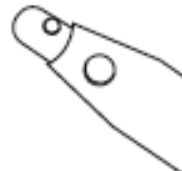
SL 115
Straight Tip e.g. for removal of viscoelastic fluids with 0.50 mm aspirating port



SL 130
Angled 90° Tip for peripheral and superior cortex removal



SL 116
SI-Sleeve Tip straight, without soft style Si-sleeve



SL 140
Curved Tip for initial cortex Removal



SL 195
O-Ring Set replacement set
(pack of 15 pieces)

IMPORTANT INFORMATION:
Replace O-rings after every 10th resterilisation



SL 100 I/A
Handpiece ergonomic handle

Entire List of SL-family

SL 100	I/A Handpiece disassembling; coaxial / monomanual	SL 119 a11	Angled 30° Si-Sleeve Tip 22G (0.70mm); Asp. Port 0.30mm
SL 110	Straight Tip for standard aspiration; 16G (1.6mm), Asp. Port 0.35mm	SL 119 a12	Angled 30° Sleeve Tip 21G (0.80mm); Asp. Port 0.30mm
SL 110/0.3	Straight Tip 16G (1.6mm) for standard aspiration; Asp. port 0.30	SL 119 a13	Angled 30° Si-Sleeve Tip 20G (0.90mm); Asp. Port 0.30mm
SL 115	Straight Tip 16G (1.6mm) for removal of viscoelastic fluid, Asp. Port 0.50mm	SL 119 a14	Angled 30° Si-Sleeve Tip D1.0mm; Asp. Port 0.30mm
SL 116	Straight Si-Sleeve Tip D1.0mm, Asp. Port 0.35mm	SL 119 a21	Angled 45° Si-Sleeve Tip 22G (0.70mm); Asp. Port 0.30mm,
SL 116 s1	Straight Si-Sleeve Tip 22G (0.70mm); Asp. Port 0.30mm	SL 119 a22	Angled 45° Si-Sleeve Tip 21G (0.80mm); Asp. Port 0.30mm
SL 116 s2	Straight Si-Sleeve Tip 21G (0.80mm); Asp. Port 0.30mm	SL 119 a23	Angled 45° Si-Sleeve Tip 20G (0.90mm); Asp. Port 0.30mm
SL 116 s3	Straight Si-Sleeve Tip 20G (0.90mm); Asp. Port 0.30mm	SL 119 a24	Angled 45° Si-Sleeve Tip D 1.0mm; Asp. Port 0.30mm
SL 116 s4	Straight Si-Sleeve Tip D1.0mm; Asp. Port 0.30mm	SL 120 30°	Tip 30° 16G angled; Asp. Port 0.30mm, for peripheral cortex removal
SL 117	Straight Si-Sleeve Tip 20G (0.90mm); Asp. Port 0.33mm	SL 120 45°	Tip 45° 16G angled; Asp. Port 0.35mm, for peripheral cortex removal
SL 118 c1	Curved Si-Sleeve Tip 22G (0.70mm); Asp. Port 0.30mm	SL 130	Tip 90° 16G angled; Asp. Port 0.35mm, for peripheral cortex removal
SL 118 c2	Curved Si-Sleeve Tip 21G (0.80mm); Asp. Port 0.30mm	SL 140	Curved Tip 16G (inn21G), Asp. Port 0.35mm, for initial cortex removal
SL 118 c3	Curved Si-Sleeve Tip 20G (0.90mm); Asp. Port 0.30mm	SL 195	O-ring set
SL 118 c4	Curved Si-Sleeve Tip D1.0mm; Asp. Port 0.30mm,		
SL 119	Angled Si-Sleeve Tip 45° D1.0mm; Asp. Port 0.35mm		

Version 02/2023

About Bürki
Bürki plans, develops and produces
microsurgical instruments in SWISS QUALITY
EN ISO 13485

Bürki inno med AG
Industriestrasse 67
9443 Widnau
Switzerland

Tel +41 (0)71 744 88 66
info@buerki.eu
www.buerki.eu